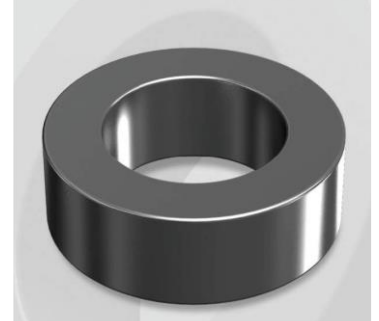


CK1016060GT

Electrical Characteristics

Material	Permeability (μ)	AL ± 8% (nH/N ²)	DCB (% min) @ 50 Oe	Coreloss (mW/cm ² , max) @50kHz, 100G
Mega Flux	60	112	82.8	3.7

OD : 1016



Core Dimensions

Dimensions		Uncoated		Coated		Color	Packaging
		(mm)	(inch)	(mm)	(inch)		
OD	(Max)	101.60	4.000	103.10	4.059	Black	Box Qty = 12 pcs
ID	(min)	57.20	2.252	55.70	2.193		
HT	(max)	16.50	0.650	17.80	0.701		

Physical Characteristics

Cross Section (A)	Path Length (ℓ)	Window Area (Wa)	Volume (V)	Breakdown Voltage (Vac)
3.522 cm ²	24.27 cm	24.37 cm ²	85.479 cm ³	1,000
0.546 in ²	9.555 in	4,808,940 cmil	5.2159 in ³	

Winding Information

0% Winding length/turn (cm)		
8.3		
40% winding factor Surface Area (cm ²)		
359.37		
40% Wound Di.(mm)		
OD	ID	HT
116.93	36.46	34.34

Typical DC Bias Performance

